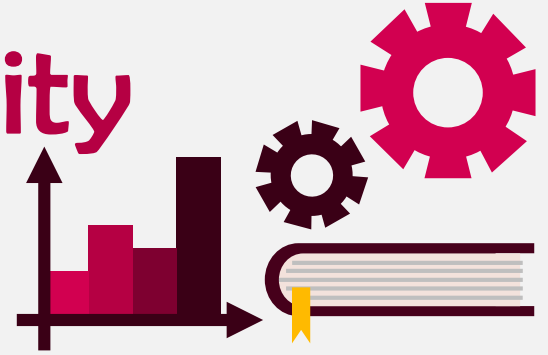




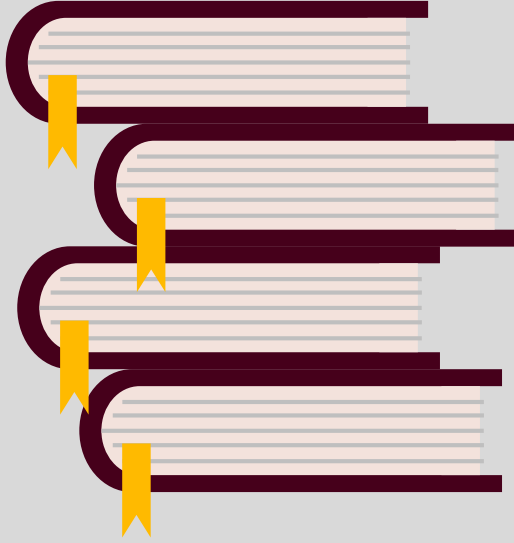
# Santa Clara University

## Class of 2013

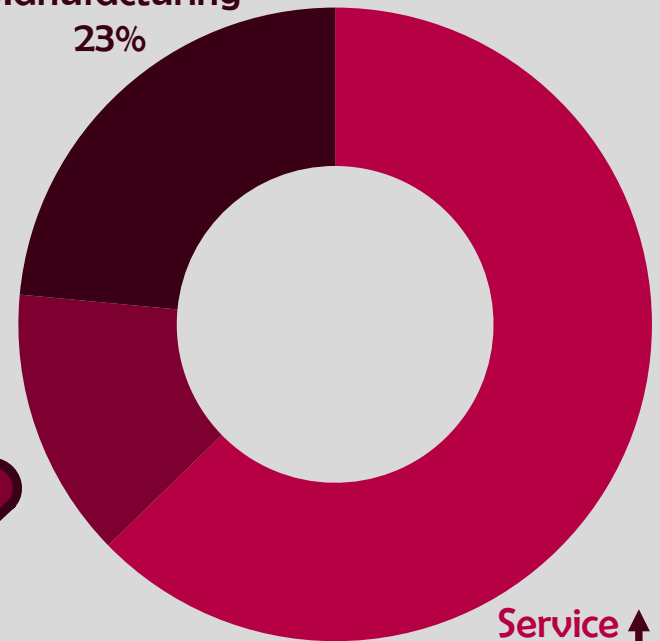


### Workforce Statistics

### Sectors of Employment<sup>1</sup>



Manufacturing  
23%



Non-Profit  
14%

Service  
63%



Note: Percentages may not add to 100 due to rounding

### Graduates Rate



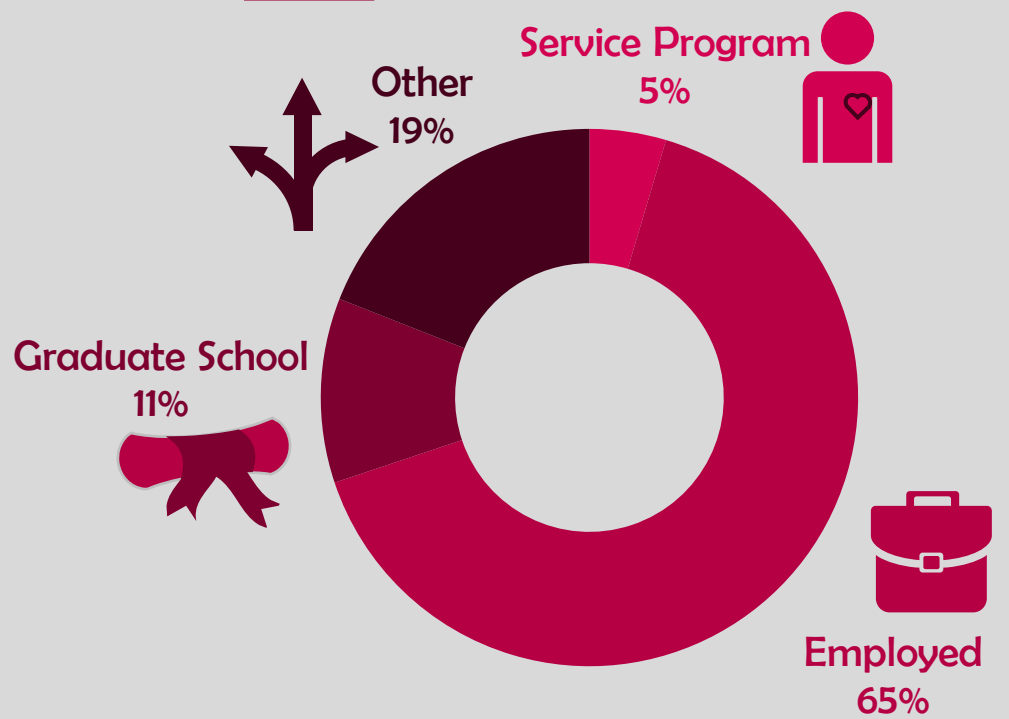
Good to Excellent preparation for...

Career<sup>1</sup> 92%

Life after College<sup>2</sup> 93%

Graduate Study<sup>3</sup> 94%

### Where Are They Now?



**36%** Granted one or more fellowships, teaching assistantships, and/or research assistantships<sup>3</sup>

**94%** Admitted to at least one graduate program<sup>4</sup>

<sup>1</sup> of those working, <sup>2</sup> all graduates, <sup>3</sup> of those attending graduate school, <sup>4</sup> of those who applied for graduate study, <sup>5</sup> of graduates in the job market

The Santa Clara Survey of recent graduates connects employment, education, civic, and satisfaction outcomes to measure the impact of a Santa Clara education. Conducted annually at six-months post-graduation, the 42.3% response rate yields a profile that is representative of the graduating class. Initiated with the class of 2008, these longitudinal data track Santa Clara's progress to ensure an education of citizens and leaders of competence, conscience, and compassion.

Source: first-time, four-year graduates responding to the Survey of Recent Graduates in 2013. For additional information, see [www.scu.edu/ir/data/student-outcomes](http://www.scu.edu/ir/data/student-outcomes) or contact: [institutionalresearch@scu.edu](mailto:institutionalresearch@scu.edu)

# Santa Clara University

## Class of 2013

College of Arts and Sciences

Arts and Humanities

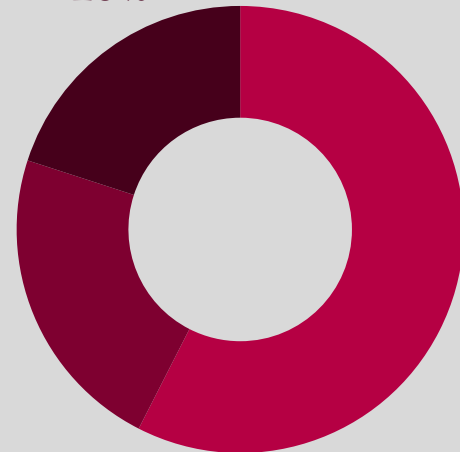
### Workforce Statistics



### Sectors of Employment<sup>1</sup>



Manufacturing  
20%



Service  
57%

Non-Profit  
23%

Note: Percentages may not add to 100 due to rounding

### Graduates Rate

SCU

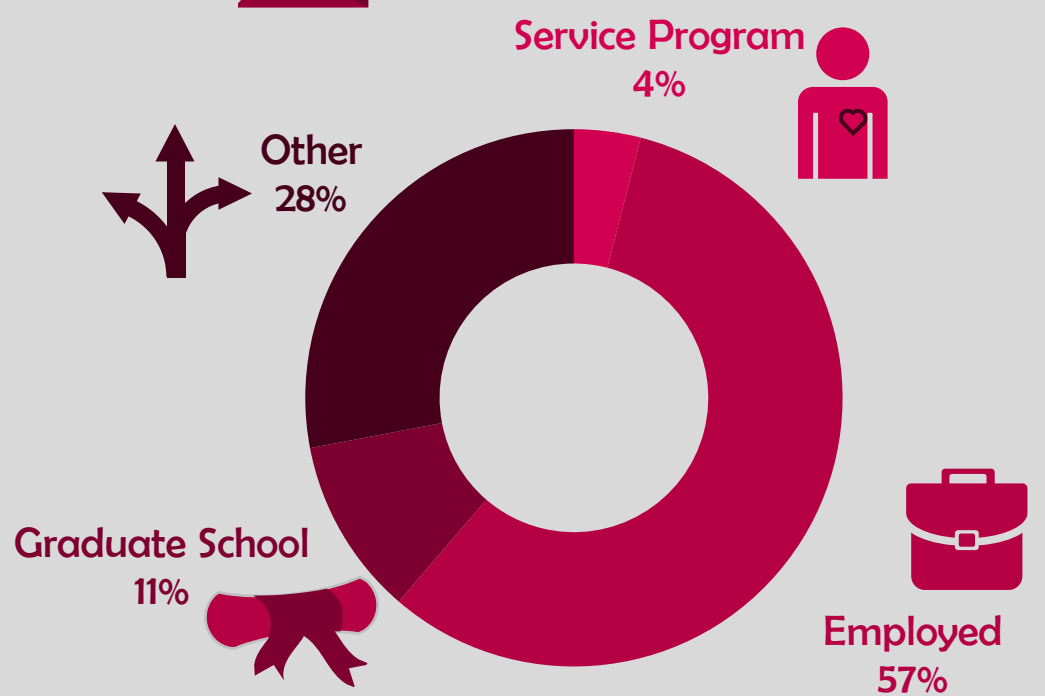
Good to Excellent preparation for...

Career<sup>1</sup> 90%

Life after College<sup>2</sup> 92%

Graduate Study<sup>3</sup> 100%

### Where Are They Now?



**33%**

Granted one or more fellowships, teaching assistantships, and/or research assistantships<sup>3</sup>

**100%**

Admitted to at least one graduate program<sup>4</sup>

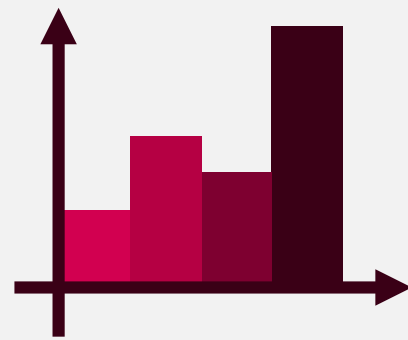
<sup>1</sup> of those working, <sup>2</sup> all graduates, <sup>3</sup> of those attending graduate school, <sup>4</sup> of those who applied for graduate study, <sup>5</sup> of graduates in the job market

The Santa Clara Survey of recent graduates connects employment, education, civic, and satisfaction outcomes to measure the impact of a Santa Clara education. Conducted annually at six-months post-graduation, the 42.3% response rate yields a profile that is representative of the graduating class. Initiated with the class of 2008, these longitudinal data track Santa Clara's progress to ensure an education of citizens and leaders of competence, conscience, and compassion.

Source: first-time, four-year graduates responding to the Survey of Recent Graduates in 2013. For additional information, see [www.scu.edu/ir/data/student-outcomes](http://www.scu.edu/ir/data/student-outcomes) or contact: [institutionalresearch@scu.edu](mailto:institutionalresearch@scu.edu)



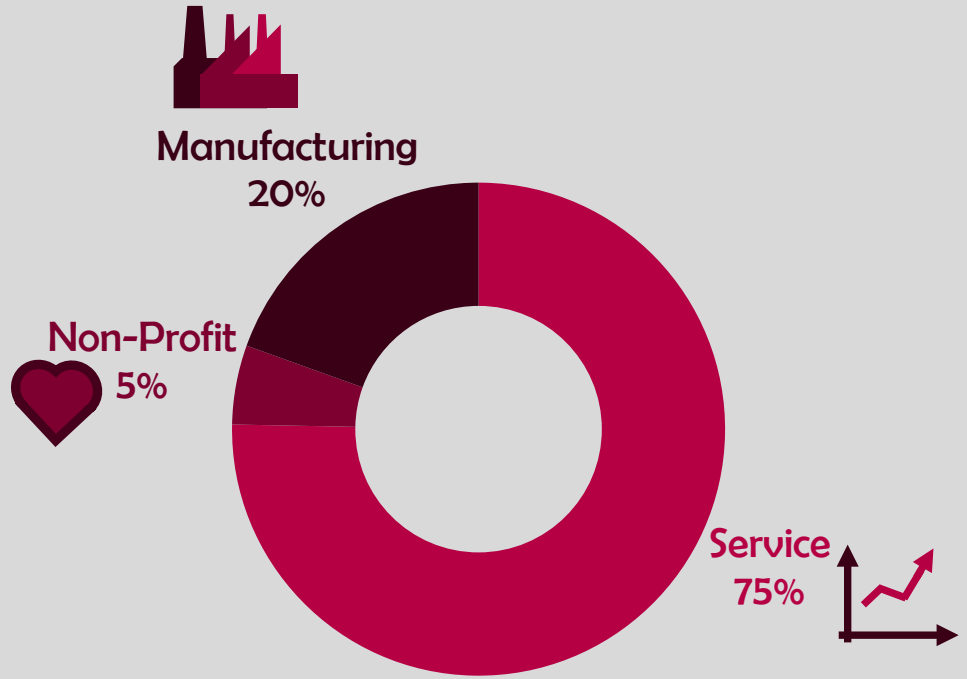
# Santa Clara University Class of 2013



## Leavey School of Business

### Workforce Statistics

### Sectors of Employment<sup>1</sup>



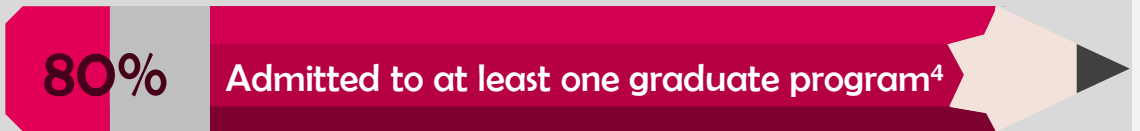
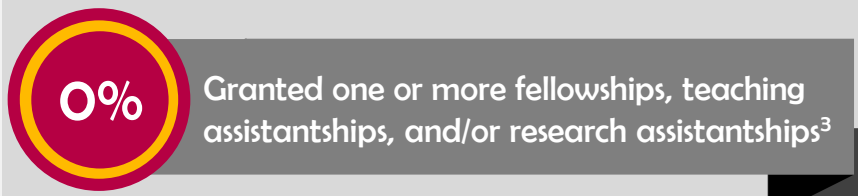
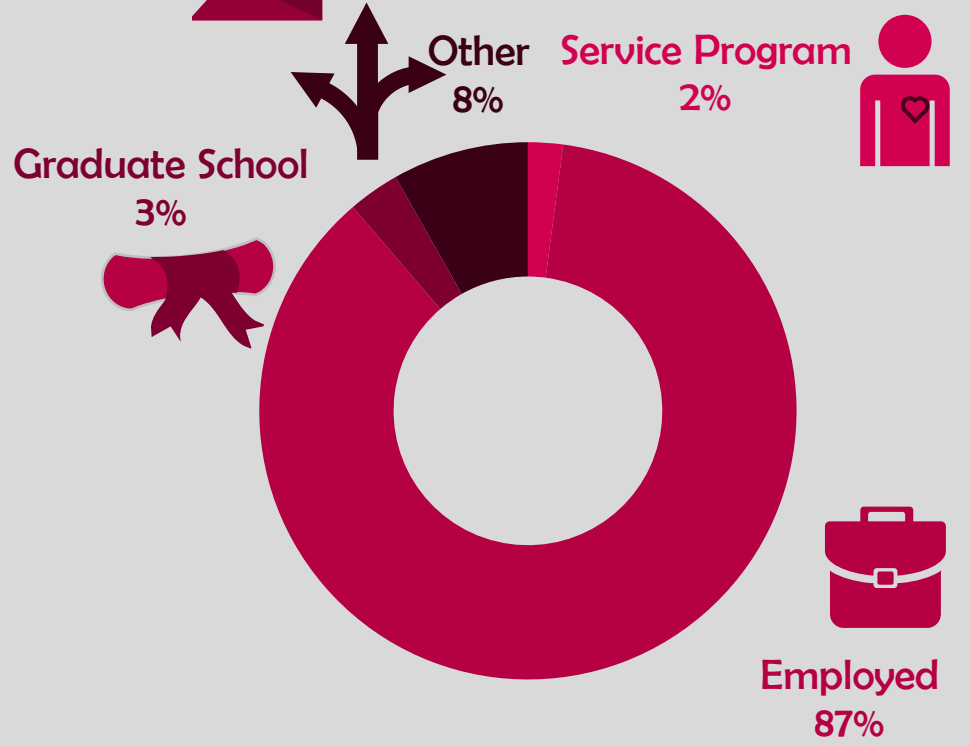
Note: Percentages may not add to 100 due to rounding

### Graduates Rate



- Good to Excellent preparation for...
  - Career<sup>1</sup> 97%
  - Life after College<sup>2</sup> 94%
  - Graduate Study<sup>3</sup> 67%

### Where Are They Now?



<sup>1</sup> of those working, <sup>2</sup> all graduates, <sup>3</sup> of those attending graduate school, <sup>4</sup> of those who applied for graduate study, <sup>5</sup> of graduates in the job market

The Santa Clara Survey of recent graduates connects employment, education, civic, and satisfaction outcomes to measure the impact of a Santa Clara education. Conducted annually at six-months post-graduation, the 42.3% response rate yields a profile that is representative of the graduating class. Initiated with the class of 2008, these longitudinal data track Santa Clara's progress to ensure an education of citizens and leaders of competence, conscience, and compassion.

Source: first-time, four-year graduates responding to the Survey of Recent Graduates in 2013. For additional information, see [www.scu.edu/ir/data/student-outcomes](http://www.scu.edu/ir/data/student-outcomes) or contact: [institutionalresearch@scu.edu](mailto:institutionalresearch@scu.edu)

# Santa Clara University Class of 2013

School of Engineering

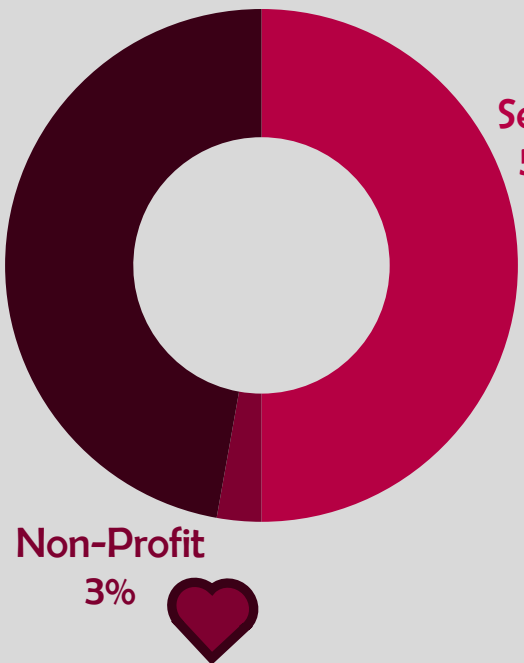
## Workforce Statistics

85%  
Are Employed<sup>5</sup>

\$60,500  
Median Salary

## Sectors of Employment<sup>1</sup>

Manufacturing  
47%



Service  
50%

Non-Profit  
3%

Note: Percentages may not add to 100 due to rounding

## Graduates Rate

SCU

Good to Excellent  
preparation for...

Career<sup>1</sup> 84%

Life after College<sup>2</sup> 90%

Graduate Study<sup>3</sup> 86%

## Where Are They Now?

Graduate School  
19%

Other  
11%

Employed  
70%

46%

Granted one or more fellowships, teaching assistantships, and/or research assistantships<sup>3</sup>

92%

Admitted to at least one graduate program<sup>4</sup>

<sup>1</sup> of those working, <sup>2</sup> all graduates, <sup>3</sup> of those attending graduate school, <sup>4</sup> of those who applied for graduate study, <sup>5</sup> of graduates in the job market

The Santa Clara Survey of recent graduates connects employment, education, civic, and satisfaction outcomes to measure the impact of a Santa Clara education. Conducted annually at six-months post-graduation, the 42.3% response rate yields a profile that is representative of the graduating class. Initiated with the class of 2008, these longitudinal data track Santa Clara's progress to ensure an education of citizens and leaders of competence, conscience, and compassion.

Source: first-time, four-year graduates responding to the Survey of Recent Graduates in 2013. For additional information, see [www.scu.edu/ir/data/student-outcomes](http://www.scu.edu/ir/data/student-outcomes) or contact: [institutionalresearch@scu.edu](mailto:institutionalresearch@scu.edu)

# Santa Clara University

## Class of 2013

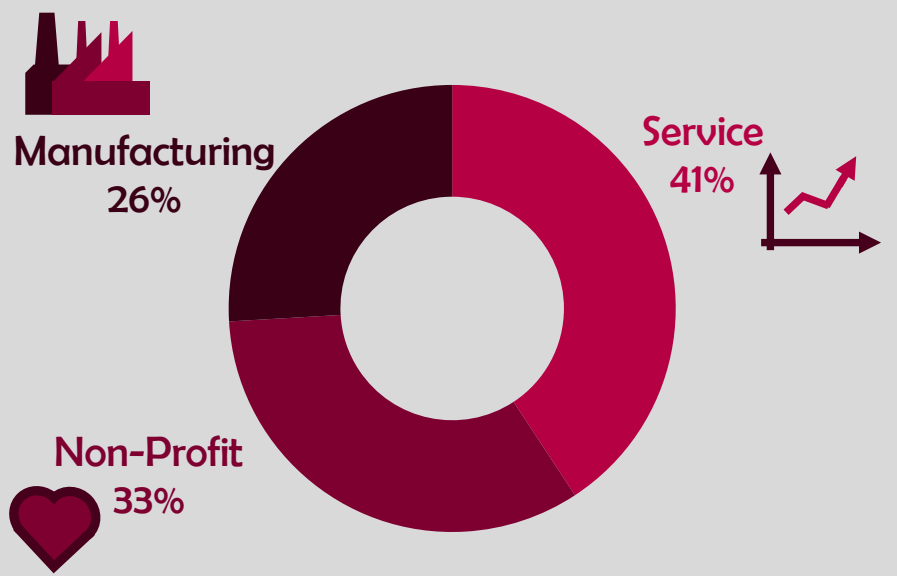
College of Arts and Sciences

Math and Natural Sciences

### Workforce Statistics



### Sectors of Employment<sup>1</sup>



Note: Percentages may not add to 100 due to rounding

### Graduates Rate



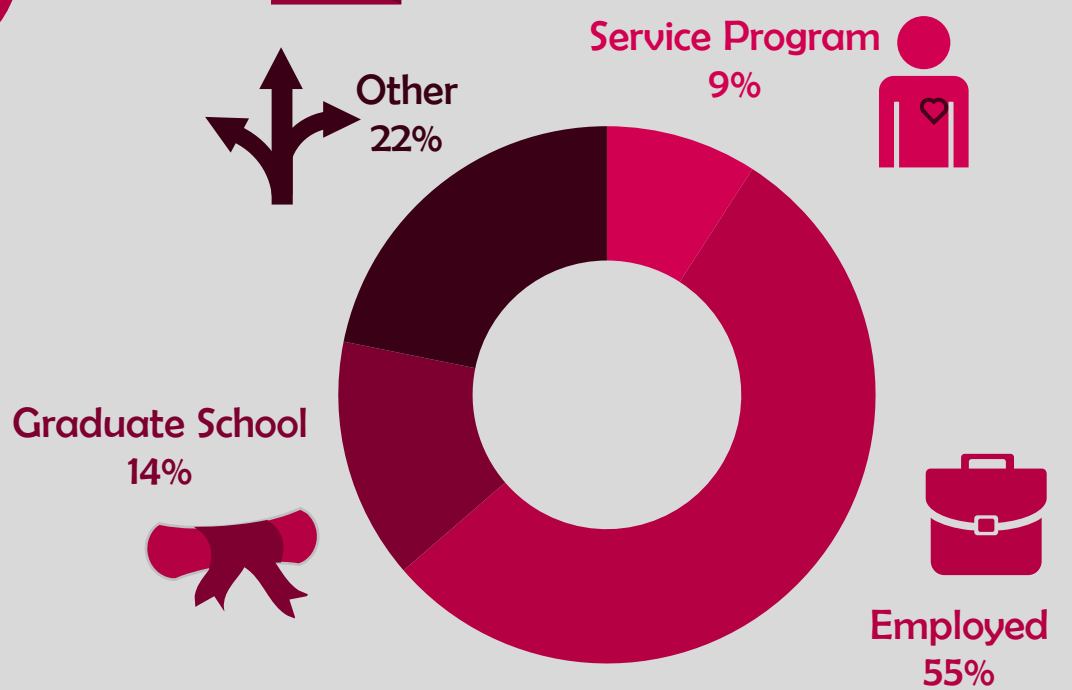
Good to Excellent preparation for...

Career<sup>1</sup> 93%

Life after College<sup>2</sup> 95%

Graduate Study<sup>3</sup> 100%

### Where Are They Now?



**38%** Granted one or more fellowships, teaching assistantships, and/or research assistantships<sup>3</sup>

**89%** Admitted to at least one graduate program<sup>4</sup>

<sup>1</sup> of those working, <sup>2</sup> all graduates, <sup>3</sup> of those attending graduate school, <sup>4</sup> of those who applied for graduate study, <sup>5</sup> of graduates in the job market

The Santa Clara Survey of recent graduates connects employment, education, civic, and satisfaction outcomes to measure the impact of a Santa Clara education. Conducted annually at six-months post-graduation, the 42.3% response rate yields a profile that is representative of the graduating class. Initiated with the class of 2008, these longitudinal data track Santa Clara's progress to ensure an education of citizens and leaders of competence, conscience, and compassion.

Source: first-time, four-year graduates responding to the Survey of Recent Graduates in 2013. For additional information, see [www.scu.edu/ir/data/student-outcomes](http://www.scu.edu/ir/data/student-outcomes) or contact: [institutionalresearch@scu.edu](mailto:institutionalresearch@scu.edu)

# Santa Clara University Class of 2013

College of Arts and Sciences

Social Sciences

## Workforce Statistics

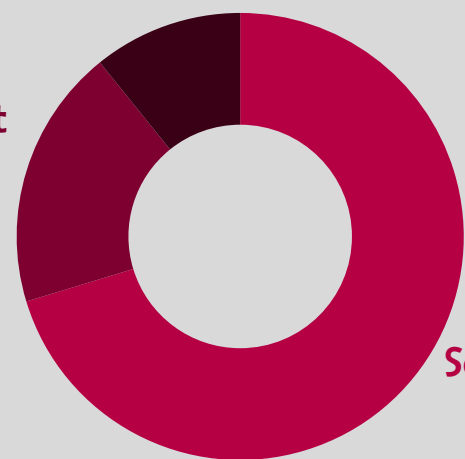


## Sectors of Employment<sup>1</sup>



Manufacturing  
11%

Non-Profit  
19%



Service  
70%

Note: Percentages may not add to 100 due to rounding

## Graduates Rate

SCU

Good to Excellent preparation for...

Career<sup>1</sup> 92%

Life after College<sup>2</sup> 93%

Graduate Study<sup>3</sup> 100%

## Where Are They Now?

Service Program  
8%

Other  
27%

Graduate School  
13%

Employed  
52%

**42%** Granted one or more fellowships, teaching assistantships, and/or research assistantships<sup>3</sup>

**100%** Admitted to at least one graduate program<sup>4</sup>

<sup>1</sup> of those working, <sup>2</sup> all graduates, <sup>3</sup> of those attending graduate school, <sup>4</sup> of those who applied for graduate study, <sup>5</sup> of graduates in the job market

The Santa Clara Survey of recent graduates connects employment, education, civic, and satisfaction outcomes to measure the impact of a Santa Clara education. Conducted annually at six-months post-graduation, the 42.3% response rate yields a profile that is representative of the graduating class. Initiated with the class of 2008, these longitudinal data track Santa Clara's progress to ensure an education of citizens and leaders of competence, conscience, and compassion.

Source: first-time, four-year graduates responding to the Survey of Recent Graduates in 2013. For additional information, see [www.scu.edu/ir/data/student-outcomes](http://www.scu.edu/ir/data/student-outcomes) or contact: [institutionalresearch@scu.edu](mailto:institutionalresearch@scu.edu)