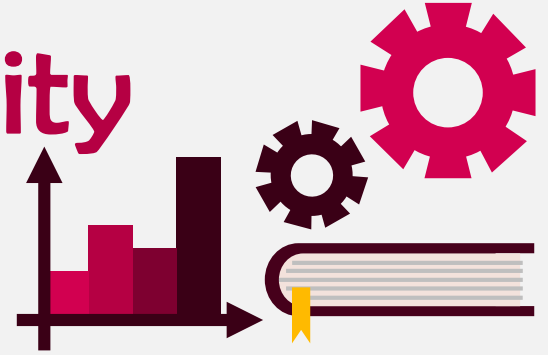


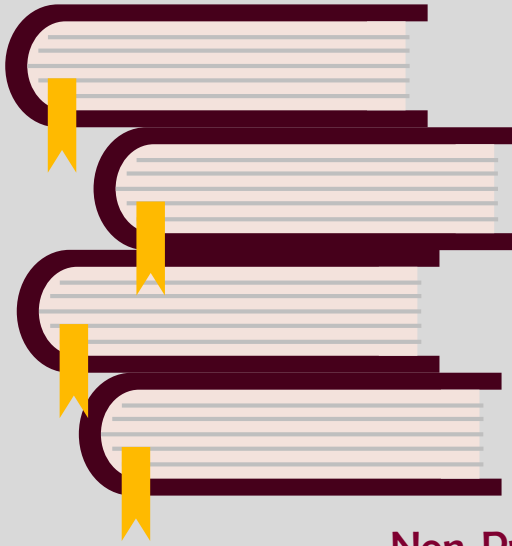


Santa Clara University Class of 2008



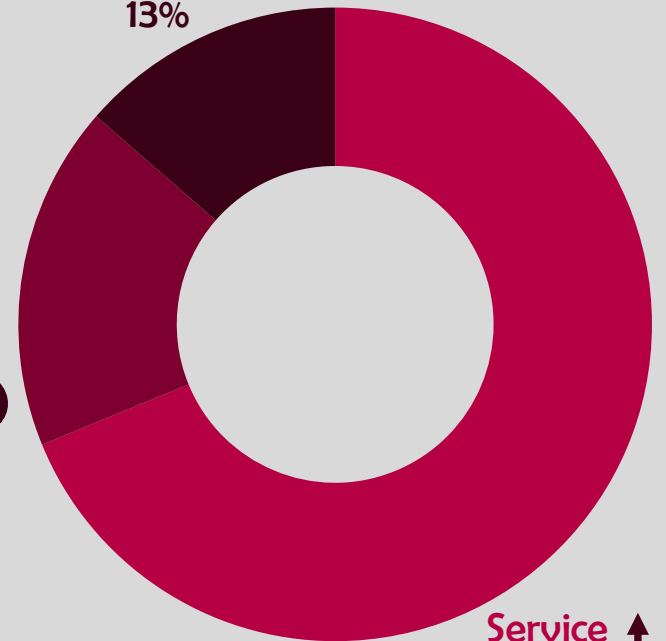
Workforce Statistics

Sectors of Employment¹



Manufacturing
13%

Non-Profit
18%



Service
69%



Note: Percentages may not add to 100 due to rounding

Graduates Rate

SCU

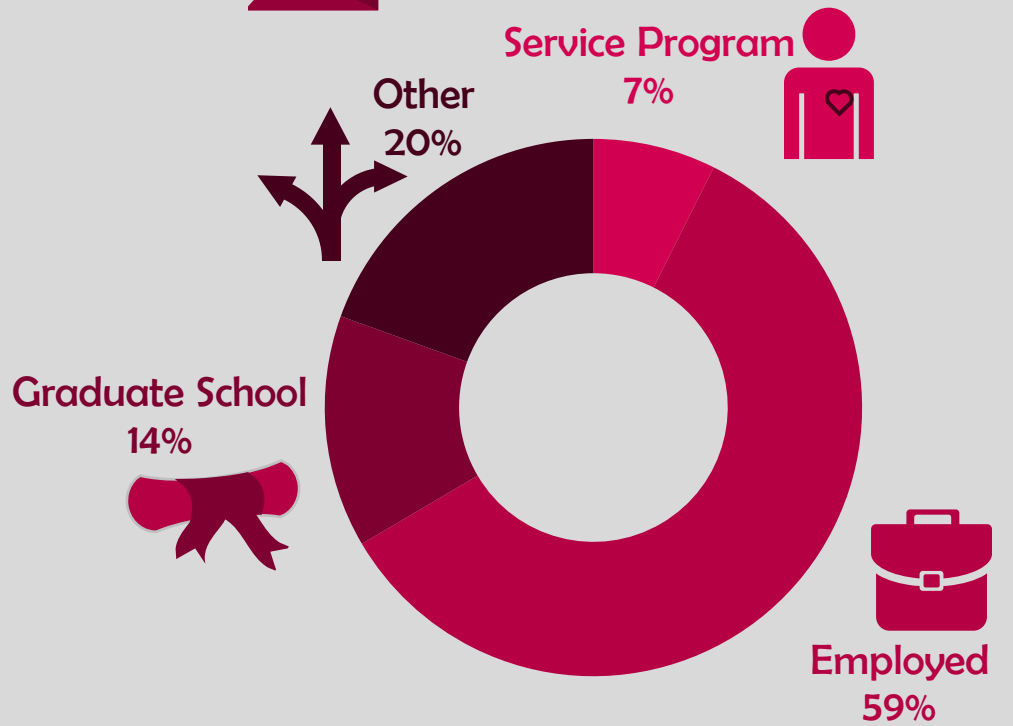
Good to Excellent preparation for...

Career¹ 93%

Life after College² 89%

Graduate Study³ 93%

Where Are They Now?



13%

Granted one or more fellowships, teaching assistantships, and/or research assistantships³

95%

Admitted to at least one graduate program⁴

¹ of those working, ² all graduates, ³ of those attending graduate school, ⁴ of those who applied for graduate study, ⁵ of graduates in the job market

The Santa Clara Survey of recent graduates connects employment, education, civic, and satisfaction outcomes to measure the impact of a Santa Clara education. Conducted annually at six-months post-graduation, the 38% response rate yields a profile that is representative of the graduating class. Initiated with the class of 2008, these longitudinal data track Santa Clara's progress to ensure an education of citizens and leaders of competence, conscience, and compassion.

Source: first-time, four-year graduates responding to the Survey of Recent Graduates in 2008. For additional information, see www.scu.edu/ir/data/student-outcomes or contact: institutionalresearch@scu.edu

Santa Clara University Class of 2008

College of Arts and Sciences

Arts and Humanities

Workforce Statistics



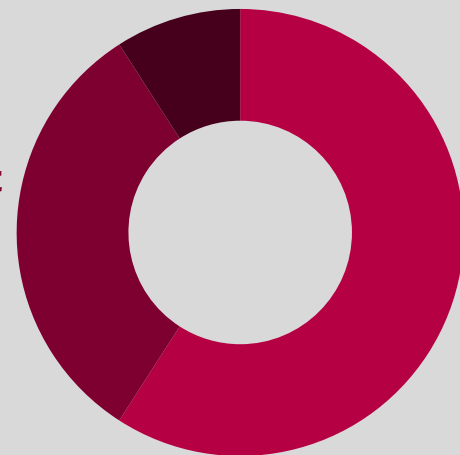
Sectors of Employment¹



Manufacturing
9%

Non-Profit
32%

Service
59%



Note: Percentages may not add to 100 due to rounding

Graduates Rate

SCU

Good to Excellent preparation for...

Career¹ 91%

Life after College² 87%

Graduate Study³ 90%

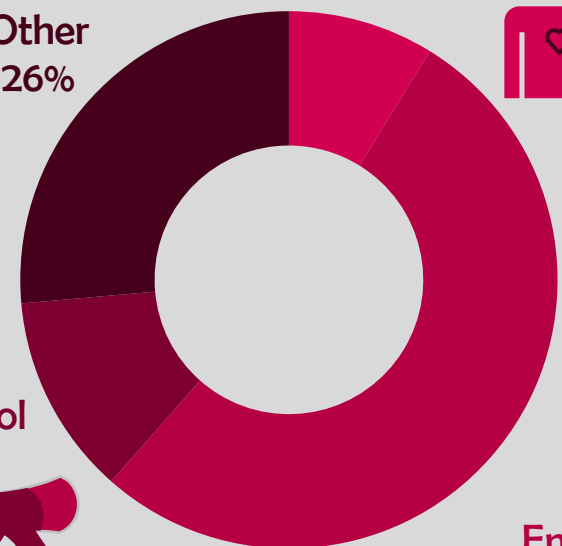
Where Are They Now?

Service Program
9%

Other
26%

Graduate School
12%

Employed
53%



6%

Granted one or more fellowships, teaching assistantships, and/or research assistantships³

94%

Admitted to at least one graduate program⁴

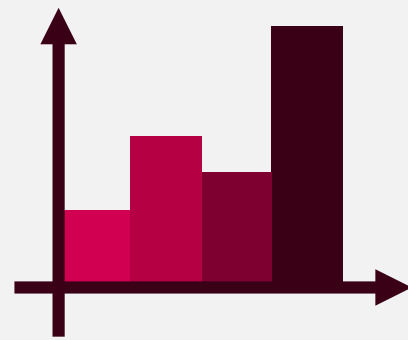
¹ of those working, ² all graduates, ³ of those attending graduate school, ⁴ of those who applied for graduate study, ⁵ of graduates in the job market

The Santa Clara Survey of recent graduates connects employment, education, civic, and satisfaction outcomes to measure the impact of a Santa Clara education. Conducted annually at six-months post-graduation, the 38% response rate yields a profile that is representative of the graduating class. Initiated with the class of 2008, these longitudinal data track Santa Clara's progress to ensure an education of citizens and leaders of competence, conscience, and compassion.

Source: first-time, four-year graduates responding to the Survey of Recent Graduates in 2008. For additional information, see www.scu.edu/ir/data/student-outcomes or contact: institutionalresearch@scu.edu



Santa Clara University Class of 2008

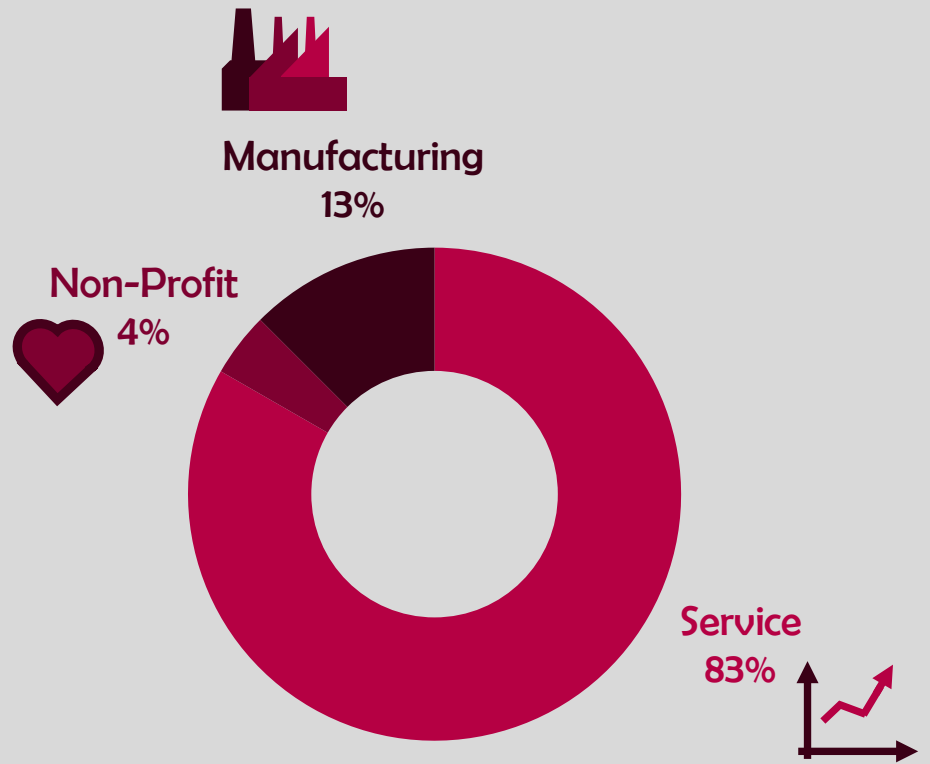


Leavey School of Business

Workforce Statistics



Sectors of Employment¹



Note: Percentages may not add to 100 due to rounding

Graduates Rate



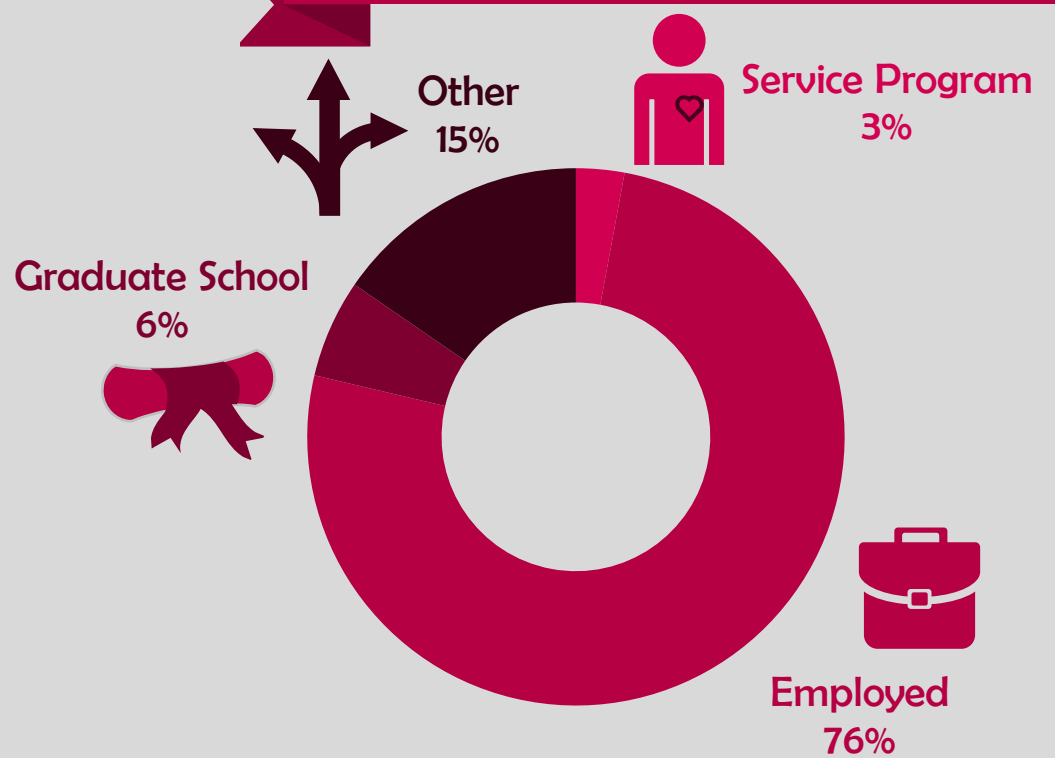
Good to Excellent preparation for...

Career¹ 95%

Life after College² 90%

Graduate Study³ 60%

Where Are They Now?



0%

Granted one or more fellowships, teaching assistantships, and/or research assistantships³

100%

Admitted to at least one graduate program⁴

¹ of those working, ² all graduates, ³ of those attending graduate school, ⁴ of those who applied for graduate study, ⁵ of graduates in the job market

The Santa Clara Survey of recent graduates connects employment, education, civic, and satisfaction outcomes to measure the impact of a Santa Clara education. Conducted annually at six-months post-graduation, the 38% response rate yields a profile that is representative of the graduating class. Initiated with the class of 2008, these longitudinal data track Santa Clara's progress to ensure an education of citizens and leaders of competence, conscience, and compassion.

Source: first-time, four-year graduates responding to the Survey of Recent Graduates in 2008. For additional information, see www.scu.edu/ir/data/student-outcomes or contact: institutionalresearch@scu.edu

Santa Clara University Class of 2008

School of Engineering

Workforce Statistics

89%

Are Employed⁵

\$64,000

Median Salary

Manufacturing
40%

Sectors of Employment¹

Service
53%

Non-Profit
7%

Note: Percentages may not add to 100 due to rounding

Graduates Rate

SCU

Good to Excellent
preparation for...

Career¹ 80%

Life after College² 79%

Graduate Study³ 100%

Where Are They Now?

Graduate School
21%

Other
8%

Service Program
4%

Employed
67%

20%

Granted one or more fellowships, teaching assistantships, and/or research assistantships³

100%

Admitted to at least one graduate program⁴

¹ of those working, ² all graduates, ³ of those attending graduate school, ⁴ of those who applied for graduate study, ⁵ of graduates in the job market

The Santa Clara Survey of recent graduates connects employment, education, civic, and satisfaction outcomes to measure the impact of a Santa Clara education. Conducted annually at six-months post-graduation, the 38% response rate yields a profile that is representative of the graduating class. Initiated with the class of 2008, these longitudinal data track Santa Clara's progress to ensure an education of citizens and leaders of competence, conscience, and compassion.

Source: first-time, four-year graduates responding to the Survey of Recent Graduates in 2008. For additional information, see www.scu.edu/ir/data/student-outcomes or contact: institutionalresearch@scu.edu

Santa Clara University

Class of 2008

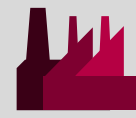
College of Arts and Sciences

Math and Natural Sciences

Workforce Statistics

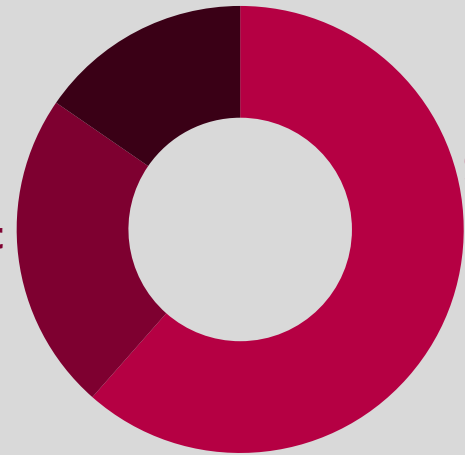


Sectors of Employment¹



Manufacturing
15%

Non-Profit
23%



Service
62%



Note: Percentages may not add to 100 due to rounding

Graduates Rate

SCU

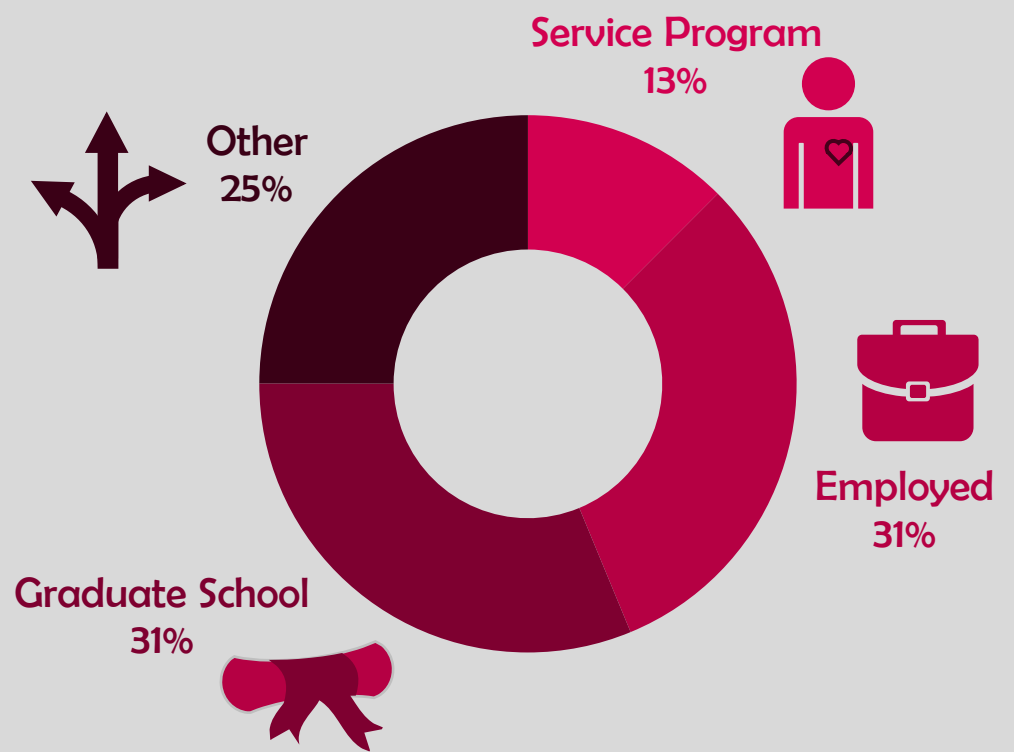
Good to Excellent preparation for...

Career¹ 100%

Life after College² 90%

Graduate Study³ 100%

Where Are They Now?



19%

Granted one or more fellowships, teaching assistantships, and/or research assistantships³

94%

Admitted to at least one graduate program⁴

¹ of those working, ² all graduates, ³ of those attending graduate school, ⁴ of those who applied for graduate study, ⁵ of graduates in the job market

The Santa Clara Survey of recent graduates connects employment, education, civic, and satisfaction outcomes to measure the impact of a Santa Clara education. Conducted annually at six-months post-graduation, the 38% response rate yields a profile that is representative of the graduating class. Initiated with the class of 2008, these longitudinal data track Santa Clara's progress to ensure an education of citizens and leaders of competence, conscience, and compassion.

Source: first-time, four-year graduates responding to the Survey of Recent Graduates in 2008. For additional information, see www.scu.edu/ir/data/student-outcomes or contact: institutionalresearch@scu.edu

Santa Clara University Class of 2008

College of Arts and Sciences

Social Sciences

Workforce Statistics

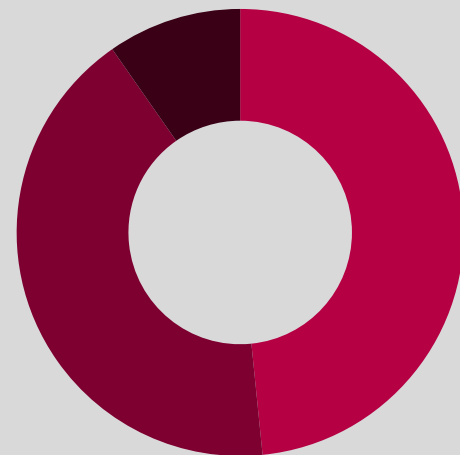


Non-Profit
42%

Sectors of Employment¹



Manufacturing
10%



Service
48%



Note: Percentages may not add to 100 due to rounding

Graduates Rate



Good to Excellent preparation for...

Career¹ 93%

Life after College² 91%

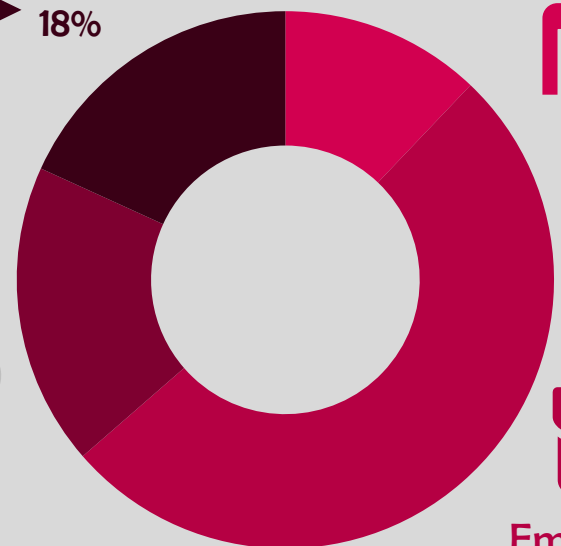
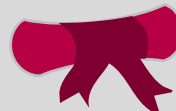
Graduate Study³ 100%

Where Are They Now?

Other
18%

Graduate School
18%

Service Program
12%



Employed
52%



15%

Granted one or more fellowships, teaching assistantships, and/or research assistantships³

93%

Admitted to at least one graduate program⁴

¹ of those working, ² all graduates, ³ of those attending graduate school, ⁴ of those who applied for graduate study, ⁵ of graduates in the job market

The Santa Clara Survey of recent graduates connects employment, education, civic, and satisfaction outcomes to measure the impact of a Santa Clara education. Conducted annually at six-months post-graduation, the 38% response rate yields a profile that is representative of the graduating class. Initiated with the class of 2008, these longitudinal data track Santa Clara's progress to ensure an education of citizens and leaders of competence, conscience, and compassion.

Source: first-time, four-year graduates responding to the Survey of Recent Graduates in 2008. For additional information, see www.scu.edu/ir/data/student-outcomes or contact: institutionalresearch@scu.edu